



# INDOFINE Chemical Company, Inc.

121 Stryker Lane, Bldg. 30, Suite 1 • Hillsborough, NJ 08844 • U.S.A.

Phone: (908) 359-6778 • FAX: (908) 359-1179

website: [www.indofinechemical.com](http://www.indofinechemical.com)

e-mail: [chemical@indofinechemical.com](mailto:chemical@indofinechemical.com)

## CERTIFICATE OF ANALYSIS

Catalog Number: 60-1005

Product Name: **CAMPESTEROL**

CAS Number: [474-62-4]

Lot Number: 1502549

Chemical Formula:  $C_{28}H_{48}O$

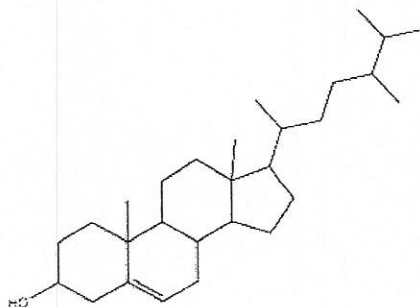
Molecular Weight: 400.69

Appearance: White Powder

Loss on drying: 1.1%

Storage: Store in a cool, dry place, protected from light.  
Keep package airproofed when not in use.

Purity(HPLC): 99.64%





# INDOFINE Chemical Company, Inc.

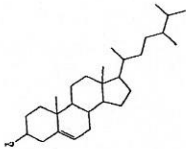
121 Stryker Lane, Bldg. 30, Suite 1 • Hillsborough, NJ 08844 • U.S.A.

Phone: (908) 359-6778 • FAX: (908) 359-1179

website: [www.indofinechemical.com](http://www.indofinechemical.com)

e-mail: [chemical@indofinechemical.com](mailto:chemical@indofinechemical.com)

## HPLC ANALYSIS



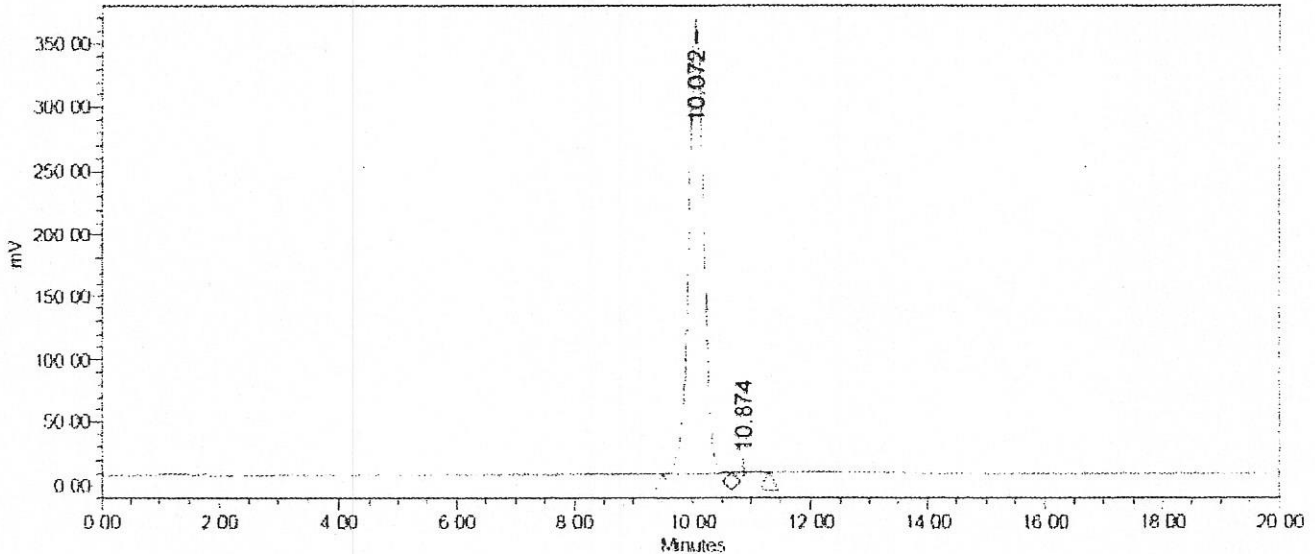
Catalog No.: 60-1005  
Product Name: Campesterol  
Lot No.: 1502549

### SAMPLE INFORMATION

Sample Name: Campesterol  
Sample Type: Unknown  
Vial: 1:F,8  
Injection #: 2  
Injection Volume: 10.00 ul  
Run Time: 20.0 Minutes

Sample Set Name:  
Acq. Method Set: Campesterol  
Processing Method: Samples 1  
Channel Name: SATIN  
Proc. Chnl. Descr.:

Auto-Scaled Chromatogram



Peak Results

Peak	Name	RT	Area	% Area	USP Plate Count	USP Resolution
1		10.072	6270806	99.64	7462.46	
2		10.874	22680	0.36	800.74	1.60